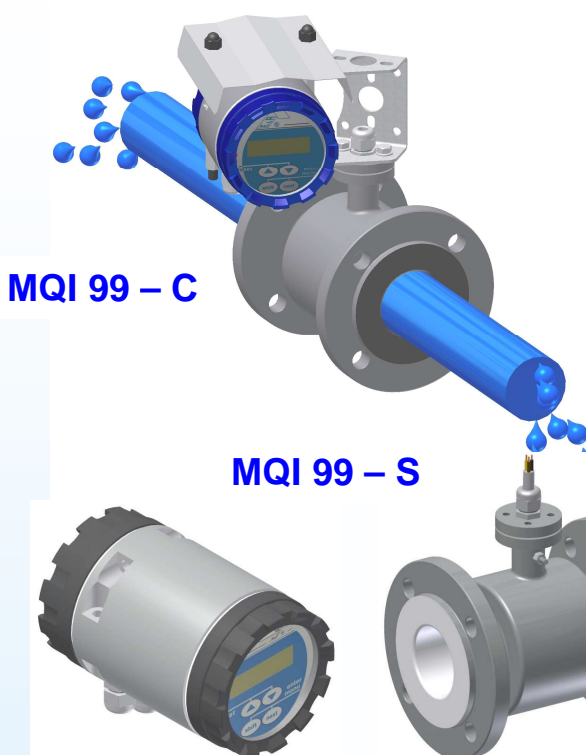




Magnetic – inductive flowmeter **type MQI 99**

Adaptive system of ELA meters

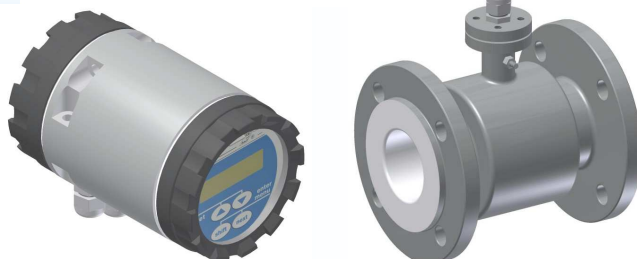


MQI 99 – C



MQI 99 – SMART

MQI 99 – S



Flexible and clever assembling system
Robust and resistant cover of sensor and transmitter
Innovative and high-power transmitter for every application
Easy and fast-moving change from compact to remote version

Applications

Agriculture
Water treatment
Power, civil engineering
Chemical, food, pharmaceutical industry

Function description

continuous measurement of current flow, positive and negative flow from DN 10 - 1000 mm flanged type, DN 10 - 100 mm wafer type.
bi-directional total flow measurement, flow direction indication
flexible possibilities comparing functions with relay output, manual set up of outputs, high-speed signal processing
data-logger: measurement data archiving (set up 5 min to 4 months), PC data output
universal power supply, small power consumption
easy change of control unit without necessity of reprogramming
additional modules according to customers requirements
diagnostics: field current displaying, empty or full pipe detection + next functions

Advantages

Compact and remote, multi-universal, efficient magnetic-inductive flowmeter, **easy and economic** assembly for every application via special bracket ELA®.

Technical data – details:

The customer assume personal responsibility for reasonable using of sensor and control unit.

Magnetic-inductive sensor:

| | |
|-------------------------------|--|
| Nominal sizes | DN 10 ÷ 1000 |
| Connecting cable | compact version MQI 99 – C: standard 0,5 m/2x2x0,25 mm ² remote version MQI 99 – S, MQI – SMART: standard 8 m/max. 50 m |
| Control principle | Pulse DC |
| Excitation coils supply | From the transmitter |
| Excitation of coils isolation | Class E |
| Connection | Flanged DIN (ANSI, BS) / hygienic - food DIN 11 851 |
| Maximum Pressure | Standard 1,6 MPa (0,6 / 1,0 / 2,5 / 4,0 MPa) |
| Protection | Standard IP 67 / NEMA 5 (IP 68 / NEMA 6) |
| Liner material | Hard + soft rubber DN 10 ÷ DN 1000 / Teflon PTFE DN 10 ÷ DN 500 |
| Liner temperature | Hard + soft rubber -5°C ÷ +90°C / Teflon PTFE -25°C ÷ +130°C |
| Electrodes | Stainless steel 316Ti, L (Hastelloy / Tantalum / Titanium / Platinum) |
| Outer casing and flanges | Carbon steel standard (Stainless Steel 304, 321) |
| Flow tube | Stainless steel 321 |
| External coating | Acrymetal multi component lacquer |
| Ambient temperature | -20°C ÷ +60°C |
| Accessories options | Stainless Steel Earthing rings for plastic pipe(DN10÷DN40). The flowmeters from DN 50÷DN 1000 are equipped of grounding electrode. Function of grounding electrode is same as grounding ring. |
| Special Options | Stainless Steel, food industry, wafer version |

Control unit MQI 99 – SMART, MQI 99 - C,S:

| | |
|--|---|
| Medium conductivity | ≥ 5 μS/cm, for demi water ≥ 20 μS/cm |
| Measurement accuracy | 0,2 % of reading, while flow is within 10 ÷ 100% of range; (for reference conditions only) |
| Flow filter | Multi-mode adjustment |
| Low flow rejection | Adjustable in steps of 0,1% |
| Flow direction | Bi-directional measurement distinguished by sign, current flow is summarized by total volume counters (S+ for positive flow and S- for negative flow) |
| Zero flow | Automatic zero point setting |
| Empty pipe detection | With adjustable detection period |
| Data logger | 4 months capacity; average 5-minute current flowrates, total volume and operating time by hour/day/month time slices |
| Real time | Clock and calendar including leap years until 2099; with battery backup |
| Display | LCD, alphanumeric, 2 x 16 characters, with backlight |
| Keyboard | 4 keys |
| Analog output | Active galvanically separated, 0(4)÷20 mA / 500 Ω, 0÷5 mA / 2 kΩ or generally selected to maximum 30 mA / 300 Ω, <i>overvoltage protection of III. level</i> |
| Frequency output | 0÷1 kHz / 0÷100 % from flow rate range, galvanically separated, passive - free opto-coupler, external load 8,2 – 10 kΩ, voltage supply for external load max. 24VDC+10% |
| Binary outputs | 1÷4 x relays, non-voltage contact, non-inductive load, 30V AC/DC/3A, modes: pulse (according to total flow in positive and negative flow), comparing (4 submodes), status (air intake) |
| Communication output (must be specified) | RS 485 (galvanically separated) or RS 232 C, Modbus RTU, ELA protocol for current and stored data transmission to PC, PLC; on request: software for data acquisition Smart MQI |
| Cable outlets | 3x PG 11, power supply cable 3 x 1 – 1,5 mm ² Cu |
| Power supply | 85 ~ 260 VAC/50~60 Hz/10 VA ^ 9 ~ 36 VDC/10 W ^ 24 VDC/10 W (± 1V) |
| Electric protection | MQI 99 – C,S: IP 67 (NEMA 5), MQI 99 – SMART: IP 65 (NEMA 4) |
| Ambient temperature | -20° C ÷ +50°C |
| Dimensions | MQI 99 – C,S: 180 x Ø 115 mm / MQI 99 – SMART: 210 x 160 x 115 mm |
| Weight | MQI 99 – C,S: 2,6 kg / MQI 99 – SMART: 1,5 kg |
| Housing material | MQI 99 – C,S: aluminium housing // MQI 99 – SMART: plastic box |
| Surface finish | Powered coated (komaxit, anodizing) / - |